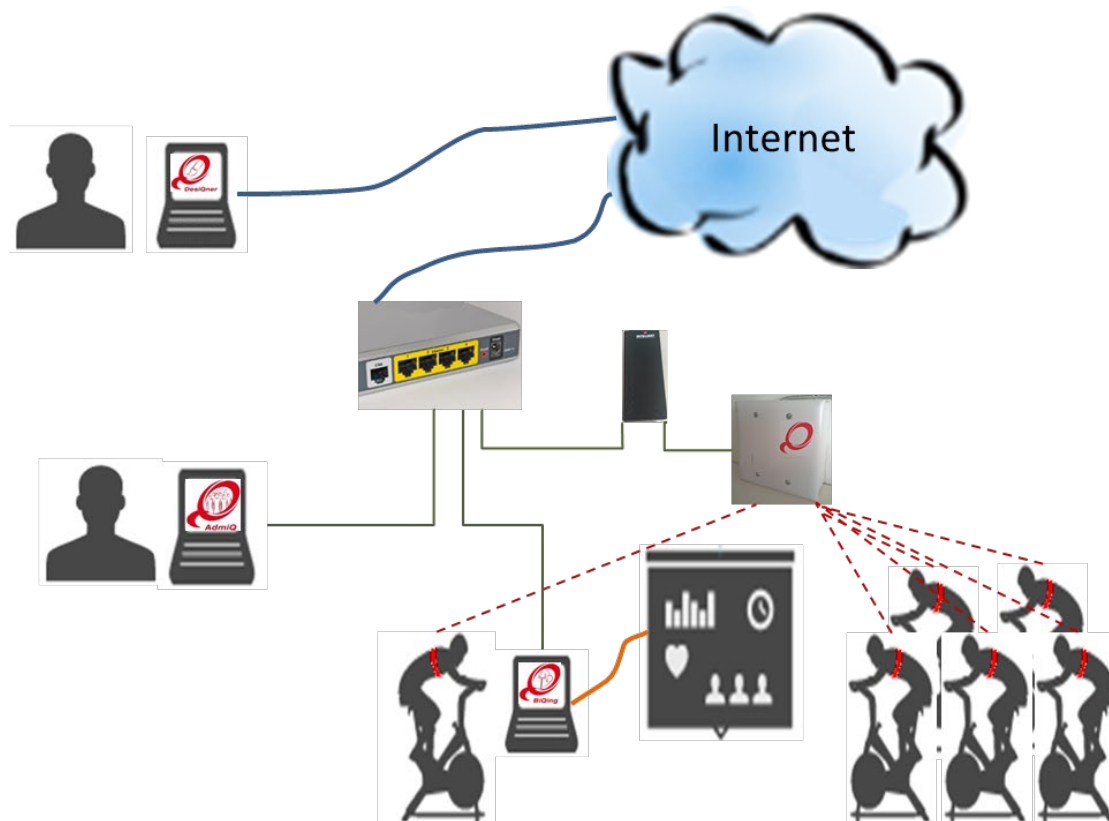


## Overview

This installation guide is applicable to IQNITER applications version 3.0 or later.

In the club IQNITER Studio™ (Cardio Training) is used for group training while DesiQner™ is the instructor's planning tool.



*Figure 1. Concept of an installation with Team Receiver. The heart rate belts and bikes communicate with the Team Receiver, and the data is transferred to IQNITER Studio software. All IQNITER Studio running in the club can receive the data. When a session is finished the data is stored in the IQNITER cloud on the Internet.*

IQNITER Team Receiver sends data to all IQNITER Studio applications connected to the same network and each IQNITER Studio computer is configured to which Team Receiver to receive data from.

## IQNITER Studio

### System Requirements

See Hardware & Software Requirements.

IQNITER Studio can be used with the IQNITER Team Receiver. The Team Receiver can be installed to pick up signals from IQNITER HR Smart Sensor and IQNITER Smart Sensors.

Installation link <https://www.iqniter.com/software/cardiotraining/publish.htm>

## Installation Instructions

- Ensure that the system requirements are fulfilled.
- Download Cardio Training from the specified installation link and follow the installation instructions.
- During the installation process associated files and drivers are downloaded and installed (including .NET framework and Suunto Team Pod driver, if required).
- On first time installation, the user is prompted for entering the License Key during the installation process.

## Additional Information

- Installation requires computer administrator access.
- In some cases, local virus scanners may interfere and block download of the application or associated files. In case, deactivate the virus scanner during installation.
- The application will automatically prompt for update when a new release is available.
- Cardio Training requires an Internet connection to give full functionality.
- Cardio Training may temporarily (a limited number of startups) run offline with limited functionality.

## Equipment Selector

The purpose of the EQuipment Selector application is to facilitate that exercisers in a group session can select the specific equipment (e.g. bike) they use when exercising in the studio. When the exerciser has checked in to the group session and is visible on the Group Screen, then the exerciser is also visible on the EQuipment Selector panel, and a bike can be selected among available bikes and paired with the exerciser's belt so bike data (Watts and Cadence) is shown for this exerciser on the Group Screen.

## System Requirements

See Hardware & Software Requirements.

The EQuipment Selector application must be setup to connect to a IQNITER Studio computer available on the same network through the Equipment Selector's Setup menu. From the Setup menu, the name or the IP-address of the IQNITER Studio computer must be entered.

Installation link <https://www.igniter.com/software/equipmentselector/publish.htm>

## Installation Instructions

- Ensure that the system requirements are fulfilled.
- Download the EQuipment Selector program from the specified installation link and follow the installation instructions.
- During the installation process associated files and drivers are downloaded and installed (including .NET framework, if required).

## Additional Information

- Installation requires computer administrator access.
- In some cases, local virus scanners may interfere and block download of the application or associated files. In case, deactivate the virus scanner during installation.
- The application will automatically prompt for update when new releases are available.
- IQNITER Studio must be running in order to connect to it from the EQuipment Selector.

- BiQing license is required to use the Equipment Selector.

## AdmiQ

### System Requirements

See Hardware & Software Requirements.

Installation link <https://www.igniter.com/software/admiq/publish.htm>

### Installation Instructions

- Ensure that the system requirements are fulfilled.
- Download AdmiQ from the specified installation link and follow the installation instructions.
- During the installation process associated files and drivers are downloaded and installed (including .NET framework).
- On first time installation, the user is prompted for entering the License Key during the installation process.
- This is the same license key as used for IQNITER Studio.

### Additional Information

- Installation requires computer administrator access.
- In some cases, local virus scanners may interfere and block download of the application or associated files. In case, deactivate the virus scanner during installation.
- The application will automatically prompt for update when new releases are available.
- AdmiQ cannot run without connection to IQNITER Cloud.

## DesiQner

Installation link <https://www.igniter.com/software/desiqner/publish.htm>

### System Requirements

See Hardware & Software Requirements.

### Installation Instructions

- Ensure that the system requirements are fulfilled.
- Download DesiQner from the specified installation link and follow the installation instructions.
- During the installation process associated files and drivers are downloaded and installed (including .NET framework).

### Additional Information

- Installation requires computer administrator access.
- In some cases, local virus scanners may interfere and block download of the application or associated files. In case, deactivate the virus scanner during installation.
- The application will automatically prompt for update when new releases are available.
- DesiQner cannot run without connection to IQNITER Cloud.